

HARNESS RACING NEW ZEALAND

APPROVED GEAR REGISTER

NOVEMBER 2023

PUBLISHED BY THE RACING INTEGRITY BOARD
IN CONJUNCTION WITH HARNESS RACING NEW ZEALAND







CONTENTS

Deafeners.....	5
Pacifiers	5
Blinds	5
Breathing Aids.....	6
Other Head Gear	6
Steering & Neck Gear	7
Overchecks & Underchecks.....	7
Hopples & Attachments	8
Speaders	8
Boots	9
Sulky Attachments.....	9
Saddle & Strapping.....	10
Bits	11

INTRODUCTION

Gear 864

1. No horse shall race in, or race with, any gear or with any appliance or device other than that from time to time approved by the Board.
2. Every horseman, owner, trainer and assistant thereof of a horse shall with regard to that horse ensure that:-
 - a. it races only in gear, appliances or devices previously approved by the Board;
 - b. any gear, appliance or device used or to be used in a race is of good quality and in good order and condition;
 - c. any sulky used or to be used in a race complies with the Sulky Specification Regulations made by the Board;
 - d. all gear is correctly applied and/or affixed so as not to malfunction or come adrift;
 - e. that all steps are taken to activate gear, appliances or devices which requires activation.
1. A horseman shall, if any of his horse's gear is broken, lost, damaged, not activated, tampered with or has malfunctioned during a race, on returning to the assembly area, report the matter to a Stipendiary Steward, forthwith.

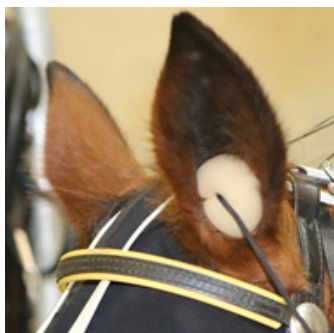
Gear **Changes** 865

1. The trainer or person in control of a horse shall give notice, in the manner prescribed in the Approved Gear Regulations, of the notifiable gear to be worn by a horse in a totalisator race no later than the official deadline for the notification of drivers at the race meeting in which a horse is entered.
2. Every horse entered in a totalisator race shall be presented in the assembly area prior to the race in the same notifiable gear as that notified under sub-rule(1).
3. The provisions of sub-rule (1) and (2) hereof shall not apply where in such circumstances a Stipendiary Steward directs otherwise.

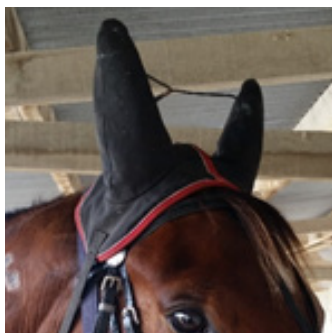


DEAFENERS

Trainer must specify if Deafners are **FIXED** or **REMOVABLE**

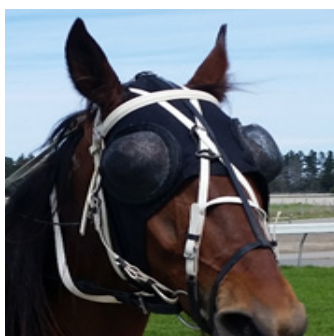


EAR PLUGS



HOOD

PACIFIERS



PACIFIER

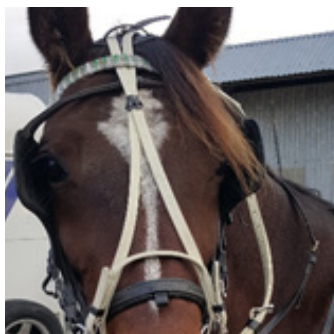


GAUZE GUARD

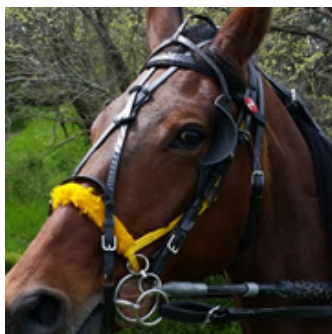


LIQUID TITANIUM MASK

BLINDS



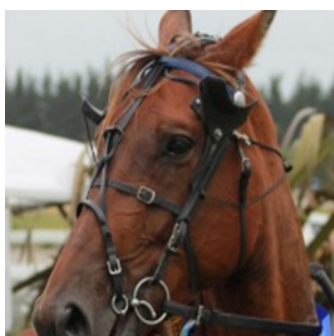
FULL BLINDS



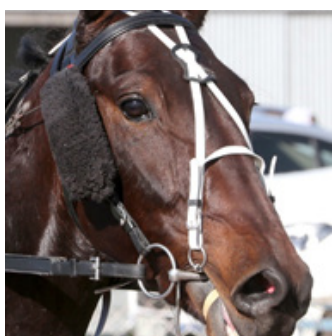
HALF BLINDS



GALLOPING HOOD



SLIDING BLINDS



SIDE WINKERS



FATHER XMAS



MURPHY BLIND

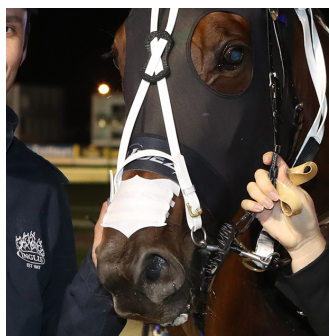
BREATHING AIDS



CORNELL COLLAR

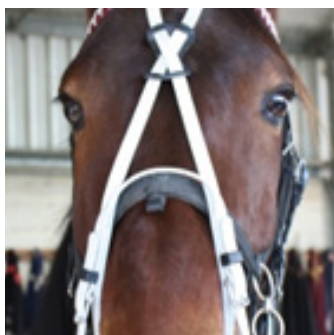


ANTI CHOKE DEVICE

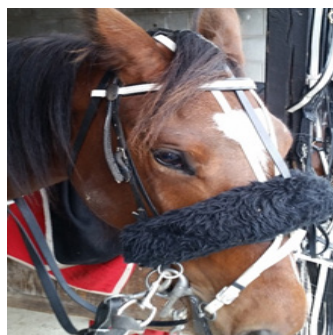


NASAL STRIP

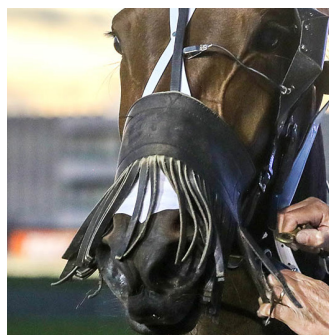
OTHER HEAD GEAR



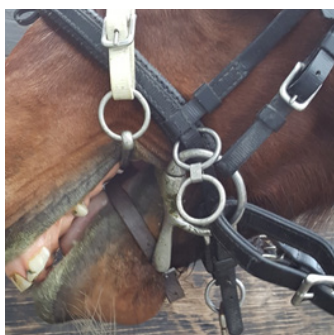
OPEN BRIDLE



SHADOW ROLL



NOSE FLAP



TONGUE TIE

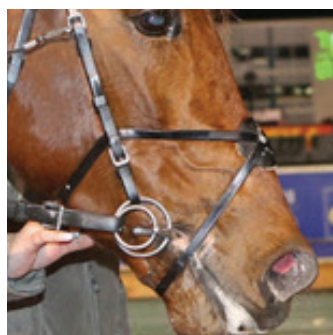


FIGURE 8



STEERING & NECK GEAR



REINS



REIN PRICKER - Prickers must be dulled down



NECK STRAP



BORING POLE - Prickers must be dulled down



BIT PRICKER - Prickers must be dulled down

OVERCHECKS & UNDERCHECKS



OVERCHECK



OVERCHECK BIT



CHIN REST



NO OVERCHECK



UNDERCHECK

HOPPLES & ATTACHMENTS



FREE LEGGED PACER



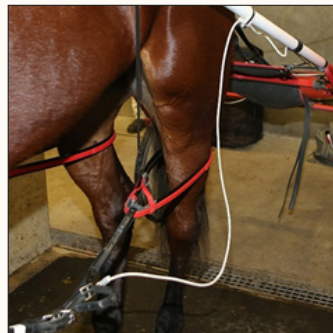
HALF HOPPLES



HOPPLES



BLOOMERS

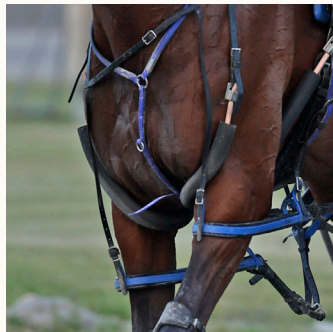


HOPPLE SHORTNERS

SPREADERS



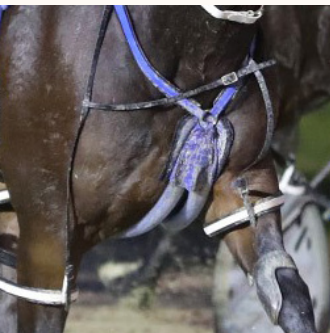
SPREADERS



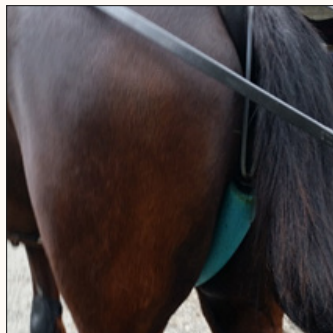
GO STRAIGHTS



TWO MINUTE BREASTPLATE
WITH ONE SPREADER



TWO MINUTE BREASTPLATE
WITH TWO SPREADERS



HIND LEG SPREADER

BOOTS



KNEE BOOTS



SHIN BOOTS



TROTTING BOOTS



HIND BANDAGES



BELL BOOTS



SCALPING BOOTS



FRONT BANDAGES



STRAIGHT LINE BOOT

SULKY ATTACHMENT



QUICK HITCH SULKY



STANDARD SULKY
ATTACHMENT



MUD GUARDS



GAITING STRAPS



SADDLES & STRAPPING



SADDLE



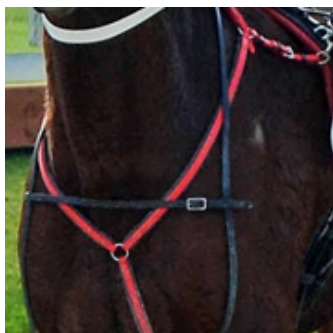
CRUPPER



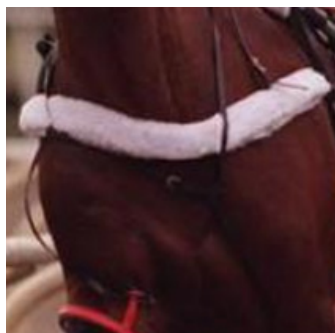
TAIL TIE CRUPPER



REARING STRAP



TWO MINUTE STRAP



BREASTPLATE



BITS



SNAFFLE BIT



STRAIGHT BIT



DOUBLE WIRE BIT



RUBBER BIT



HAPPY MOUTH BIT



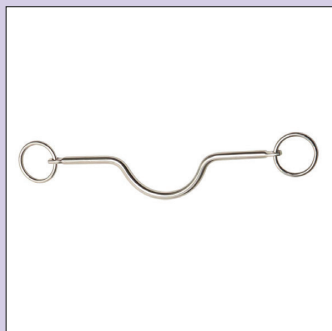
BUTTERFLY BIT



CRESCENDO BIT



LUGGING BIT



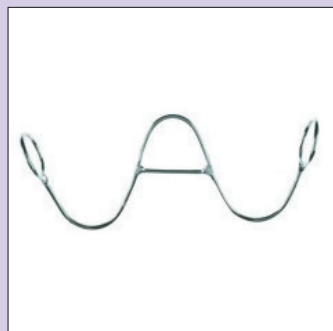
JAWBREAKER EVEN



JAWBREAKER UNEVEN



TOM THUMB BIT



W BIT

